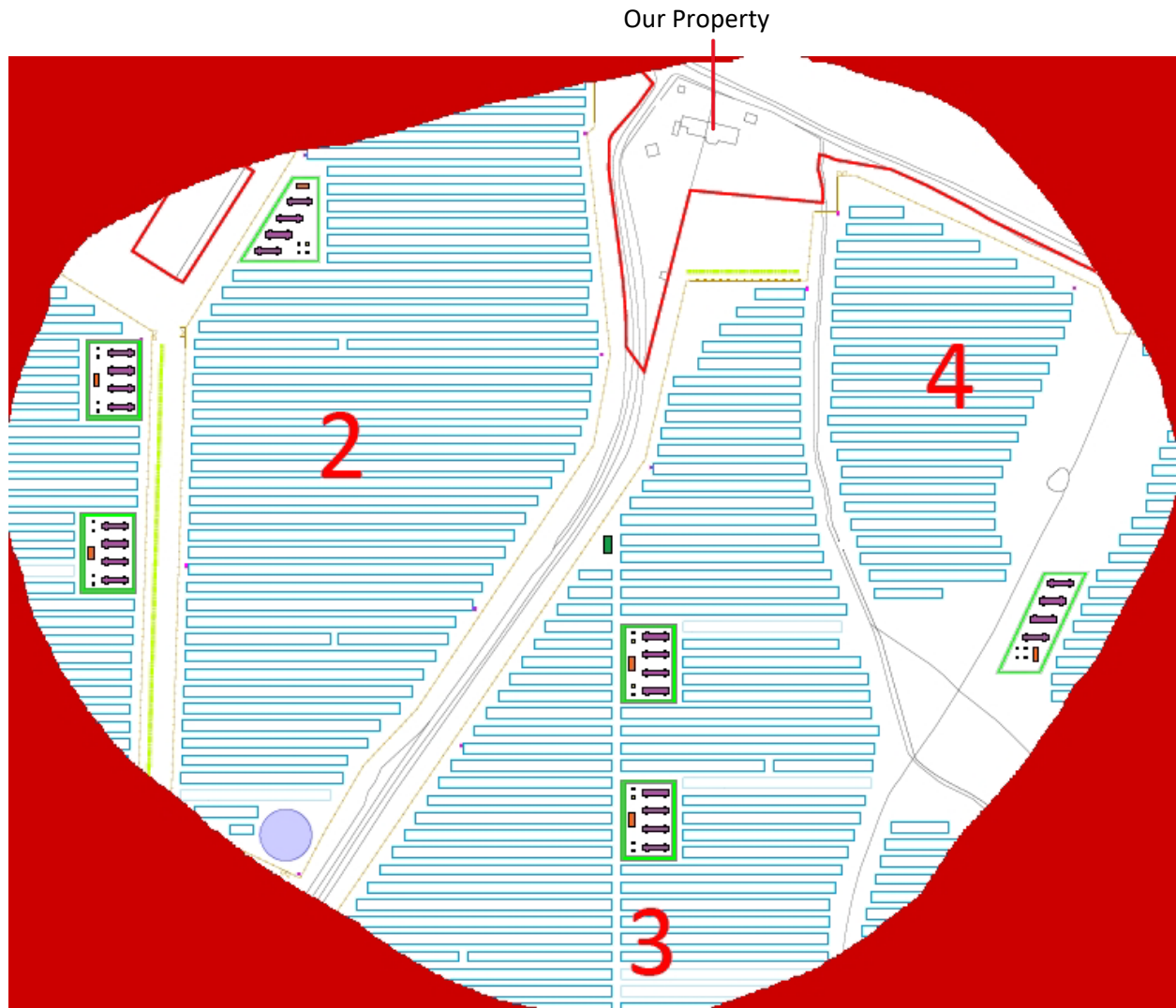


I am very, very concerned about the vicinity of numerous battery energy storage systems (BESS) to my property. There are no less than six! battery containers within 300m one only 150m away. See image.



The government's own Health and Safety Guidance for Grid Scale Electrical Energy Storage Systems states the following...

With lithium-based technologies, thermal runaway is a key failure mode which can lead to hazards to the nearby environment. Thermal runaway can be caused by a wide variety of internal and external factors, including physical damage, misuse, aging and fluctuating temperatures outside of the safe temperature range. Thermal runaway can lead to:

- ***Fire***
- ***Explosion***
- ***Release of toxic gases or water run-off***

These hazards pose a serious risk to the immediate vicinity of any BESS, which places an emphasis on the consideration of site location.

We could literally be sitting in the middle of a ticking time bomb that could have fatal consequences. This project is badly located and badly assessed and should not be allowed to progress. At minimum the BESS should be removed from the project as the locations are entirely unsuitable.

Peter Allen.

.